



TRANSFORMING HOW
THE WORLD MANAGES
ITS RESOURCES



WHERE INNOVATION MEETS IMPACT



For more than half a century, TOMRA began with a simple idea: to help customers solve a practical problem and cut down on waste. What started with a single reverse vending machine has grown into a global business, developing technology to recover more, reuse better, and rethink how resources are managed across industries. Today, TOMRA is more than a technology provider. We're partners in progress, on a mission to transform how we all obtain, use and reuse the planet's resources to enable a world without waste.

At our core, innovation, passion, and responsibility guide everything we do, from building sensor-based solutions that work towards achieving our mission, to creating a culture focused on collaboration and real-world impact. As a global leader in technology, we're also committed to growing with purpose, and we're aiming high. We have a defined pathway to reach net zero by 2050, plan to use at least 90% sustainable materials in all new products by 2030 and aim to make half our portfolio fully circular by the end of each product's life. While there's more work ahead, we're clear on the direction and committed to steady progress.

With more than 5,800 colleagues in over 100 countries, our drive to keep innovating is what helps us, and our customers, stay ahead and make realchange possible.

A world without waste is within reach. At TOMRA, we're committed to making it happen.

Tove Andersen, President & CEO, TOMRA

GLOBAL WASTE CHALLENGES

The world is facing big resource challenges. We're generating more waste, plastic pollution is piling up, and food loss is making it harder to feed a growing population. It's taking a toll on both the planet and the economy.

Currently, only 14% of plastic packaging is collected for recycling, and just 2% is recycled in a closed-loop system. Most ends up in landfills, incinerators, or the environment, leading to significant greenhouse gas emissions and resource loss.

At the same time, 14% of food is lost between harvest and retail because of poor handling, storage, or sorting. That means wasted water, energy, labor, and lost income for the growers and packers who keep food systems running. It's waste the world can't afford.

By combining smart technology with forward-thinking policies, we can make better use of what we've already got.

TURNING WASTE INTO OPPORTUNITY

Every year, TOMRA's solutions help divert millions of tons of materials from landfills and incineration, cutting emissions tied to virgin material extraction and keeping valuable resources in play. Our sorting and collection technologies increase the amount of material recovered, boost recycling rates, and cut down on litter, capturing more than 53 billion used drink containers for recycling and reuse worldwide.

But our impact goes beyond packaging. In food, TOMRA helps growers and packers make sure every piece of produce finds its place, whether sold fresh or processed. That means less waste, more efficiency, and more value from every harvest. In mining, our

ore sorting technology helps reduce waste from the start, cutting down the amount of material that needs to be processed. It's one way we're turning extraction into a more resource-smart process.

We're also proving that materials once seen as "lost" can be brought back into the loop. We sort plastics into clean, usable material streams, making them available to recyclers who turn them into new products.

Through our product circularity platform, TOMRA Retility, we give old TOMRA machines and components a new life, recovering valuable parts and materials to build new ones and keep materials in use. It's one more way we're reducing waste in our own operations.



TOMRA'S STRATEGIC VISION

At TOMRA, we're continuously working to change the way resources are managed, keeping materials in circulation for longer and helping address some of the biggest challenges in the food industry- from availability and quality to safety and sustainability. It's about cutting waste before it happens.

We integrate circular principles into our product development, cut down on inefficiencies across the value chain, and are committed to reaching net-zero emissions by 2050. At TOMRA, innovation, passion, and responsibility guide not just what we do, but how we work together. Our success is built on our people, which is why we prioritize well-being, safety, diversity, and equity in our workplace. This is how we remain an employer of choice and a trusted partner across industries.



HOLISTIC RESOURCE SYSTEM: A SMARTER APPROACH TO HOUSEHOLD WASTE

A part of how TOMRA tackles the world's waste challenges is by bringing together new ideas and proven solutions that work for municipal solid waste. Together with sustainability experts, Eunomia, we studied the best systems around the world and combined them into what we call Holistic Resource System. This approach looks at the big

picture, integrating waste strategies tailored to local needs. Underlined by extended producer responsibility (EPR), policies that make producers part of the solution for a circular economy, and committed to higher recycling rates and a holistic approach to waste management, it brings together three key elements:

1

Deposit return systems (DRS)

Proven to collect beverage containers with high quality for recycling and reuse.

2

Separate collection

Sorting post-consumer materials at the source to improve recycling efficiency.

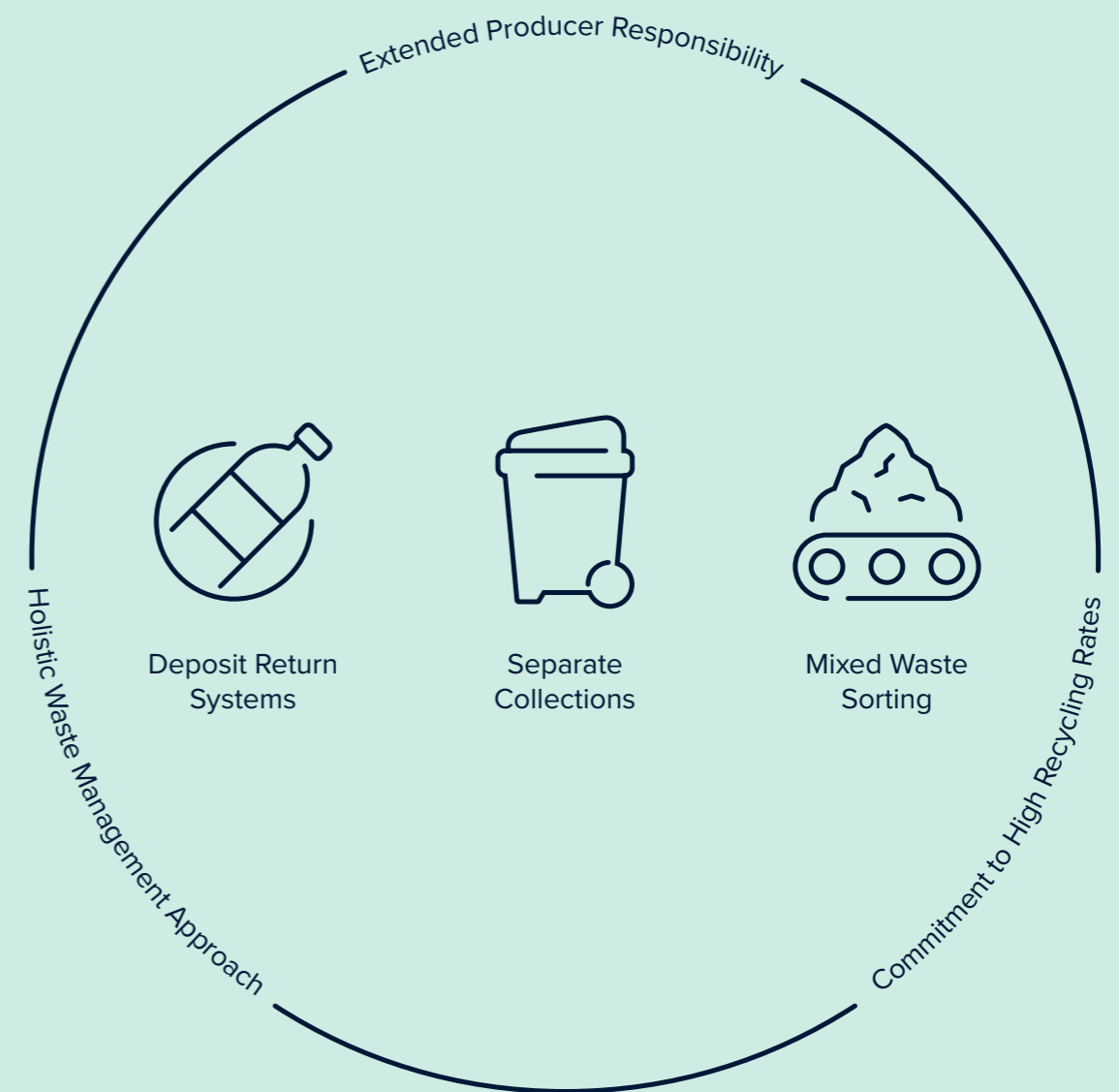
3

Mixed waste sorting

Pulling valuable recyclables out of general waste streams before they're lost to incineration or landfill, and is an essential means to increase recycling rates overall. For plastics, mixed waste sorting coupled with advanced mechanical recycling or chemical recycling, where advanced mechanical recycling is not feasible, turns these materials back into usable substances.



By combining these systems, countries and communities can boost recycling rates, lower greenhouse gas emissions, and make real progress towards circularity.



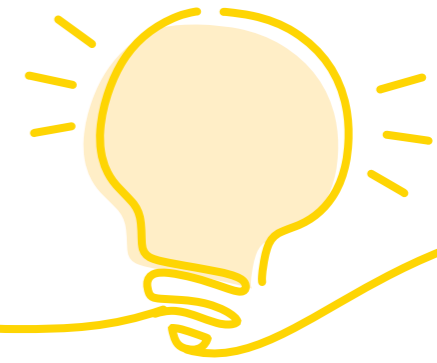
EMPOWERING A RESOURCE EFFICIENT FUTURE

Every day, our technology helps prevent waste, keep resources in use, and cut climate impact. But as TOMRA grows, we're making sure that our own footprint stays in check.

We've set science-based targets to reach net-zero by 2050, validated by the Science Based Targets initiative (SBTi). We're committed to being transparent about our progress, and to always improving how we deliver real climate solutions.



OUR TECHNOLOGY



SHAPING THE FUTURE OF RESOURCE EFFICIENCY

At TOMRA, innovation drives us. Our technology is smart, precise, and efficient, and our tailored solutions help businesses maximize yield, reduce waste, and operate more sustainably.

PRECISION SORTING WITH SENSOR TECHNOLOGY

TOMRA has been developing sensor-based sorting systems for decades, and we've learned a lot along the way. Today, our technology is helping recover materials with more speed and precision than ever.

AUTOSORT™, for example, is our flagship solution in sorting for recycling and has been installed in nearly 100 countries. It uses powerful sensors to spot different types of plastic, paper, and metals in real time, helping sort faster, more accurately, and with less waste. In food, our technology can detect everything from discoloration to

foreign objects, helping improve quality, cut waste, and make food safer. We use advanced imaging in mining to sort more precisely and reduce resource use.

The technology in our reverse vending systems makes beverage container returns simple and efficient. Each container is instantly recognized as it enters the machine, enabling a fast, precise, and smooth recycling experience for users and reliable sorting of material types for operators. This high-purity collection ensures bottles and cans can be recycled into new bottles and cans, reducing waste and litter.



AI AND MACHINE LEARNING: SMARTER SORTING, BETTER RESULTS

Artificial intelligence (AI) isn't new to us. TOMRA's been using AI in our solutions since the 1990s. In fact, our first AUTOSORT™ used it back in 1996. AI helps us sort with even greater precision, improving recovery rates and making sure fewer valuable materials are lost to waste streams.

Our AI-driven innovations include:

1

GAINnext™, our award-winning deep learning technology, solves complex sorting challenges and achieves breakthroughs once thought impossible.

2

LUCAi™ uses deep learning to bring precision to grading fresh fruit. It gives growers more control to sort produce accurately, which means better yield and more consistent quality.

3

OBTAIN™ and **CONTAIN™**, our groundbreaking deep learning technologies, which help mining customers extract more value using less resources.

4

We also continue to expand our AI boundaries with focused investments in companies such as **PolyPerception** and **c-trace** which offer AI-powered waste analysis solutions to cut material loss and help meet changing regulations.

BUILT FOR IMPACT

TOMRA'S STRUCTURE AT A GLANCE

TOMRA is set up to make the biggest difference where it matters most. Our three core divisions, TOMRA Collection, TOMRA Recycling, and TOMRA Food, develop smart, sensor-based solutions that help make every resource count. Beyond that, TOMRA Horizon looks ahead, exploring new areas where we can have even more impact. With organic ventures such as TOMRA Reuse and TOMRA Feedstock, coupled with targeted investments such as c-trace, we're building solutions that take circularity and efficiency even further.

DIVISIONS OVERVIEW



TOMRA Collection

TOMRA Collection specializes in reverse vending solutions that make beverage container recycling and reuse easy and efficient. With over 91,000 installations in 60+ markets, our machines now capture more than 53 billion used beverage containers every year.

This helps reduce plastic pollution and drive Clean Loop Recycling, where bottles and cans are returned through reverse vending machines and kept separate from other waste, so they stay clean and can be recycled into new containers, not down-cycled into something else – and reuse.

A well-designed deposit return system can collect over 90% of containers, a target many countries are now working toward.



TOMRA Recycling

With over 11,900 systems in 100+ countries, TOMRA Recycling turns waste and metals into valuable resources. Our advanced sorting technology recovers and upgrades materials, helping boost recycled content in new products and cut emissions. Since launching the industry's first deep learning sorting solution in 2019, now known as GAINnext™, we've kept pushing AI for even smarter, more efficient sorting.

TOMRA Mining uses sensor-based sorting to make mineral processing more efficient and less resource-intensive. Our technology helps to reduce water and energy use, and has even enabled some extraordinary finds, like Motswedi, the second largest rough diamond ever recovered in Botswana and using our X-ray technology.



TOMRA Food

TOMRA Food develops sensor-based sorting and grading technologies that help reduce contamination and minimize food loss across the supply chain. With over 16,100 units worldwide, we support growers, packers, and processors with more accurate grading, higher yields, and new opportunities for profitability, all while helping deliver safe, high-quality food more sustainably.

A key milestone on that journey was in 2018, when we introduced LUCAi™, the first deep learning model for fresh fruit. It set a new benchmark in sorting precision, starting with blueberries and now used across a growing range of crops.



TOMRA Horizon

TOMRA Horizon is where we explore new business opportunities and circular models that move us closer to a world without waste.

With TOMRA Feedstock, we're tackling plastics that were previously left out of the recycling stream. Our new plant in Norway will sort 90,000 tons a year, bringing more material back into the loop.

Through TOMRA Reuse, we're helping shift from single-use takeaway packaging to reuse. In our pilot system in Aarhus, Denmark, over a million reusable cups have already been returned, with an impressive 85% return rate and growing.

In 2024, we also welcomed c-trace, a pioneer in digital waste collection. By combining their smart technology with our global reach, we're helping cities and businesses collect more and build truly circular systems.



TAILORED BUSINESS MODELS FOR DIVERSE NEEDS

At TOMRA, we work closely with our customers to create technologies and solutions that fit their exact needs, from a single machine to a complete system. Beyond that, we partner with industry stakeholders, policymakers, and technology providers to co-create solutions that make a real difference. It's a collaborative process, built on shared goals.

GLOBAL FOOTPRINT, LOCAL IMPACT

With 119,900 systems in over 100 markets, TOMRA has a strong global footprint, with headquarters in Asker, Norway, and key regional offices across Europe, North America, and Asia-Pacific.

We work closely with customers and a trusted network of distributors and partners to make sure our solutions fit local needs. Backed by our offices, production sites, and service hubs around the world, this global-local setup helps industries and governments boost resource efficiency and circularity, wherever they are.

PART OF A BIGGER PICTURE

Beyond business, our solutions support global environmental goals, aligning with initiatives like the United Nations Sustainable Development Goals (SDGs), the United Nations Environment Programme (UNEP) and the World Business Council for Sustainable Development (WBCSD), helping to achieve meaningful, systems-level change.



SCALING FINANCIAL GROWTH WITH PURPOSE

At TOMRA, we believe strong financial performance goes hand in hand with achieving real impact. Our strategy supports steady, long-term growth, built on innovation, smart investment, and a clear focus on the future.

In recent years, we've increased our revenue, maintained healthy profits, and delivered strong returns to shareholders. This gives us the stability to keep investing in new technologies, expand into new markets, and accelerate progress.

We're growing fast and doing it with intention. By strengthening our core business and exploring new opportunities, we're balancing profitability with sustainability. It's all part of building lasting value for our shareholders, our societies, and tomorrow's world.



WORKING AT TOMRA

We're a team built on curiosity, collaboration, and the drive to make a real difference. We question the usual way of doing things, test out new ideas, and turn bold thinking into real solutions. Our work moves fast, keeps evolving, and always leaves space for fresh perspectives. At TOMRA, we welcome different backgrounds, value unique experiences, and support each other to reach our goals.



OUR VALUES: HOW WE WORK

Our values shape how we create, collaborate, and keep making progress:



Innovation

We stay curious, push limits, and challenge the status quo to build smarter solutions.



Passion

We're motivated, committed, and support one another. And we celebrate wins together.



Responsibility

We act with integrity, care about people's well-being, and own our impact, in business, sustainability, and daily life.



A WORKPLACE THAT WORKS FOR YOU

People do their best when they feel supported, valued, and trusted. That's why we create a space where our teams can grow and thrive.

Flexibility: We offer flexible hours and remote options where possible, knowing that balance looks different for everyone.

Growth and development: We invest in people through learning opportunities and an Employee Share Purchase Program that lets you share in TOMRA's success.

Well-being: We encourage healthy balance, because recharging is key to long-term success.

At TOMRA, the work is meaningful, teamwork is real, and growth is part of the deal. By creating a place where people feel empowered, we help our teams make an impact, in their careers and for the world. Explore our careers and discover how you can grow with TOMRA.



TOMRA

www.tomra.com

