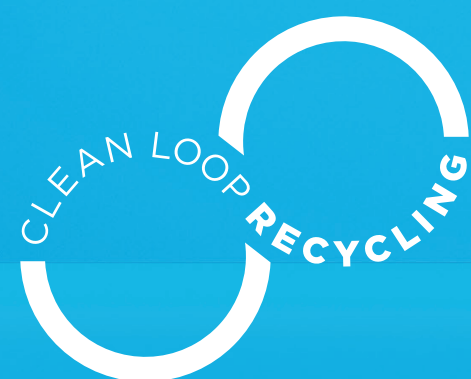
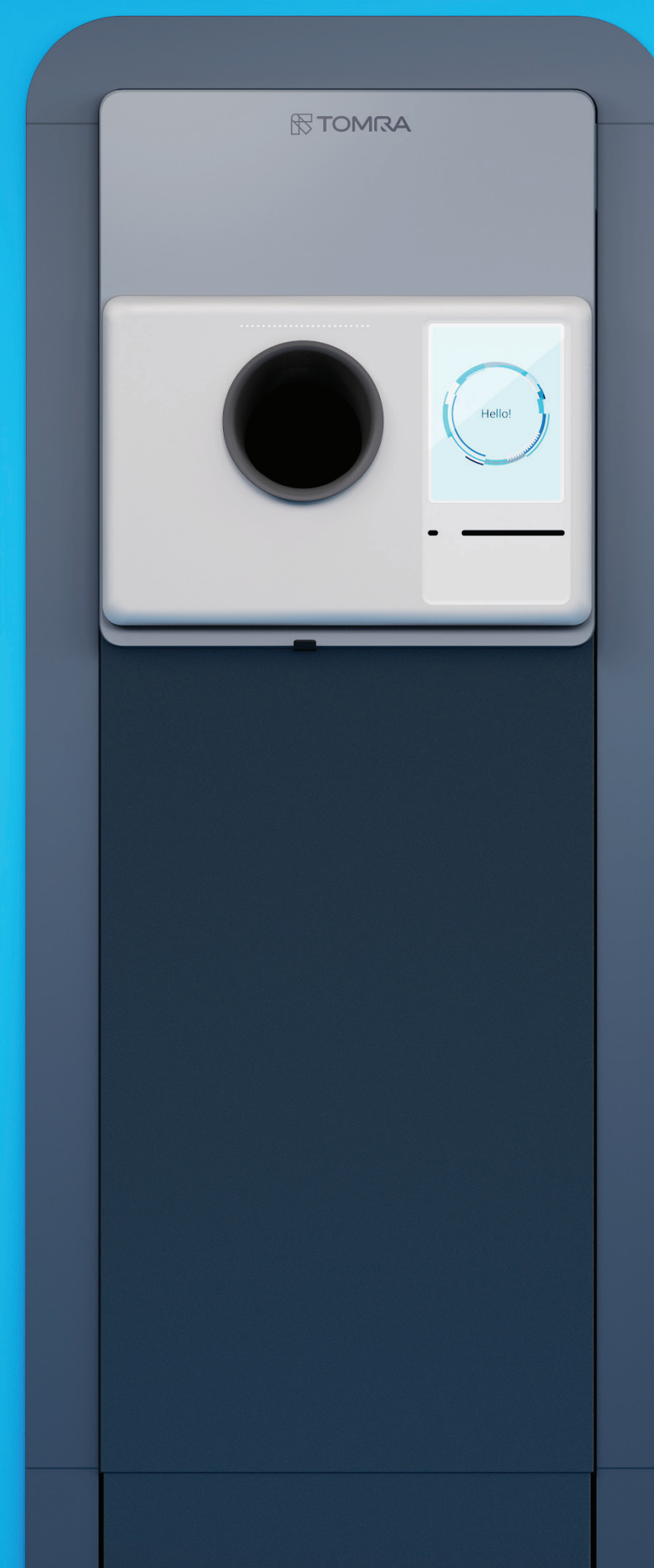




TOMRA T100

Tried. Tested. Transformed.



FLEXIBLE LINE

Please note the final machine may differ from the images shown in this brochure.

Tried and tested – Now made even better

Single-feed machines have been the industry-leading solution for deposit returns for decades. TOMRA T100 is built on the legacy of the machines that came before - delivering all the benefits you know:

- efficient, reliable handling
- space-saving design
- processing of all types of beverage containers - including glass and crates.

We've listened to customer feedback and addressed previous pain points - introducing updates that make a real difference:

- a more robust build, improved durability
- easier cleaning features
- even more flexible setup

This makes TOMRA T100 a stronger solution for today's recycling needs.



Easy upgrade. Smarter investment.

Upgrading from TOMRA T9? It's effortless. TOMRA T100 shares the same footprint, making installation quick and cost-effective—just swap and go.

TOMRA T100 also integrates seamlessly with TOMRA MultiPac, EasyPac, or RollPac systems and end-of-lane kits, extending the lifespan of your existing equipment.

And if your needs change, the T100 is built for flexibility. Easily upgrade from a bottle-only machine to a bottle-crate machine without replacing the entire unit - ensuring long-term relevance.

Maximize the value of your current setup—while preparing for what's next.



First-rate user experience

With its next generation RVM design and intuitive features, the TOMRA T100 offers a fast, efficient, and user-friendly recycling experience. From light guidance and a high-brightness display with a new graphical user interface to an overall sleek, modern look, every detail is crafted to delight.

As the perfect companion to the TOMRA R2, the T100 is designed to match both functionality and aesthetics - creating a cohesive in-store experience that enhances usability for both customers and staff.

Did you know? Providing your customers with this level of convenience makes them more inclined to return* - helping drive traffic and loyalty to your store.

*According to the 2023 report "How Recycling Impacts Shopping Behavior"



Ready for future regulations and market demands

The TOMRA T100 is built with tomorrow in mind. It is designed for low maintenance and high sustainability. With energy-saving features such as dimming and sleep mode, a focus on sustainable material choices, and a reduced environmental footprint backed by life cycle assessments, the T100 helps you stay ahead of evolving regulations.

It supports a fully digital user journey minimizing the need for printed vouchers and simplifying the customer experience.



Upgrade while maximizing the lifespan of your existing assets

Reuse existing equipment

Connects to your existing TOMRA backroom solution and end-of-lane configuration kits

with TOMRA MultiPac 2



with TOMRA EasyPac
Along, Across & Aside



with TOMRA RollPac



Retailers help the world recycle

Deposit return systems (DRS) for beverage container recycling help keep valuable resources in a continuous loop of use and reuse. At TOMRA, we call this process Clean Loop Recycling.

As a retailer, you're at the heart of Clean Loop Recycling. You play a critical role at the point where consumers buy and return their containers.



Let's put recycling to work for you

Choosing to partner with TOMRA means creating a **great recycling experience for your customers**, making a **smart investment for your store**, and choosing a solution that brings **peace of mind and excellent support for your operations**.

TOMRA T100™

Bottle

MEASUREMENTS

Dimensions [W x D x H]	600 mm x 665 mm x 1676 mm +266mm
Infeed height ¹	Lowest height 1200 mm
Adjustment range for height	26,6 mm (1676-1942)
Wall cutout measurements	Width 660 mm, Height min. 1706 mm, max. 1974 mm. Wall depth (only relevant for T100 B with short door through the wall) max. 200 mm.
Footprint	0.4 sqm
Weight ²	87.3 kg

STANDARD CONFIGURATION

Machine type	Consumer-facing reverse vending machine
Colors	Front part of machine: Pantone 430C and Pantone Cool Grey 5C Infeed cone: Pantone 426C Lower cabinet and back of machine: Anodic Black AE20104000720 Wall frame: Pantone 431 C
User interface	Display: 10.4" touch display, video and sound capabilities, user guidance on machine screen Printer: Thermal printer
Compatible Backroom products	EasyPac, EasyPac 2, MultiPac 2 MultiPac Air and Rollpac.

RECOGNITION

Recognition technology	TOMRA Flow Technology™ (360° instant recognition, shape recognition, full container detection, barcode recognition, and metal detection)
Accepted containers	Non-refillable and refillable plastic bottles, non refillable and refillable glass bottles, and cans.
Speed capability ³	Up to 60 containers per minute
Container sizes	Bottle size: Diameter 50-130 mm, height 85-380 mm Can size: Diameter 50-100 mm, height 80-200 mm
Optional features	Security mark recognition (market specific)

ENVIRONMENTAL

Humidity	Maximum 90% relative humidity, non-condensing
Temperature	+10°C to +40°C / / +50°F to 104°F The machine has been designed for indoor use
Noise	Equivalent continuous sound pressure: LAeq < 70 dB

ELECTRICAL

Power consumption	Idle 45W, active 285 W
Mains	230 V AC 1-phase w/ground 50 Hz, min 10 A, max 16A

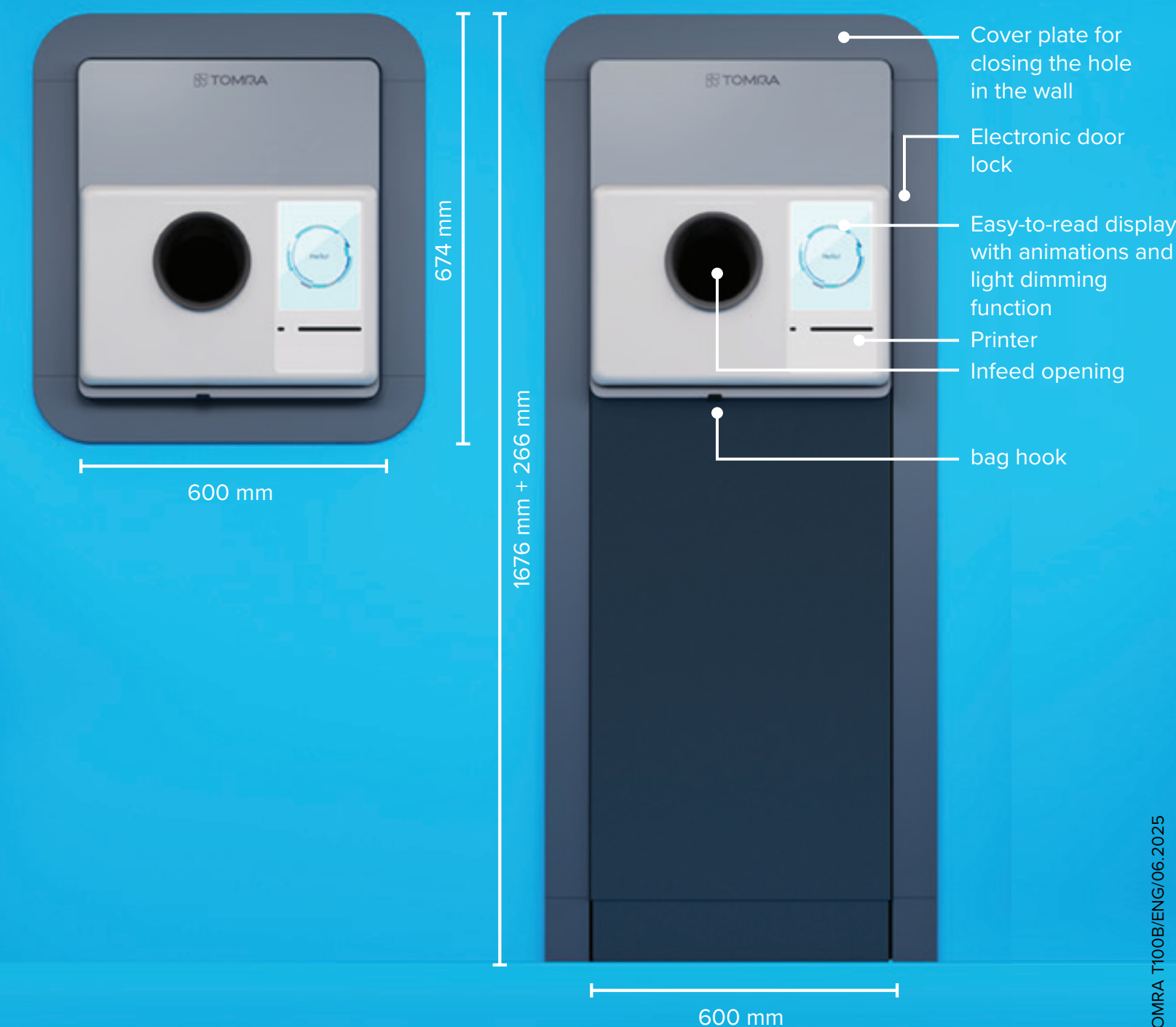
CONNECTIVITY

External IT interface	LAN (Ethernet TCP/IP), POS compatible
Digital tools	Fully compatible with TOMRA's portfolio of digital products and APIs

¹ To bottom of infeed cone.

² May vary according to packaging

³ Performance data and system speed may vary across markets, deposit regulations, system requirements and type of backroom cabinet.



TOMRA

Get in the Loop at tomra.com/reverse-vending



TOMRA CERTIFICATION

TOMRA SYSTEMS ASA has implemented and maintains a Quality and Environmental Management System which fulfils Nemko's provisions for Management System Certification and the requirements of standards NS-EN ISO 9001:2015 and NS-EN ISO 14001:2015, with the scope described by the organization on 2018-05-29. The certification covers the development and delivery of automated systems for recycling.



LEGAL COMPLIANCE

This product is part of a configurable system of machine components. When assembled on installation site, tested and connected to the grid, the installation must be labelled and have the CE mark affixed. The CE marking is based on the following European.

Directives:
2006/42/EU, Community Legislation on Machinery.
2014/30/EU, Electromagnetic Compatibility (EMC).
2011/65/EU, Restrictions of Hazardous Substance (RoHS).
2012/19/EU, Waste Electrical and Electronic Equipment (WEEE).

We reserve the right to make changes to specifications without prior notice. While every effort has been made to ensure all information contained in this document is accurate, TOMRA assumes no liability for any errors, inaccuracies or omissions that may occur. All products and offers are subject to country availability. Please consider the environment before printing.

TOMRA T100™

Bottle Crate

MEASUREMENTS

Dimensions [W x D x H]	600 mm x 970 mm x 1768 mm +174mm
Infeed height ¹	Lowest height 1200 mm
Adjustment range for height	17,4 mm (1768-1942)
Wall cutout measurements	Width 660 mm, Height min. 1706 mm, max. 1974 mm.
Footprint	0.58 sqm
Weight ²	189.6 kg ²

STANDARD CONFIGURATION

Machine type	Consumer-facing reverse vending machine
Colors	Front part of machine: Pantone 430C and Pantone Cool Grey 5C Infeed cone: Pantone 426C Lower cabinet and back of machine: Anodic Black AE20104000720 Wall frame: Pantone 431 C
User interface	Display: 10.4" touch display, video and sound capabilities, user guidance on machine screen Printer: Thermal printer
Compatible Backroom products	EasyPac, EasyPac 2, MultiPac 2 MultiPac Air and Rollpac.

RECOGNITION

Recognition technology	TOMRA Flow Technology™ (360° instant recognition, shape recognition, full container detection, barcode recognition, and metal detection). TOMRA True Vision™ (Crate and content detection)
Accepted containers	Non-refillable and refillable plastic bottles, non refillable and refillable glass bottles, cans and crates.
Speed capability ³	Up to 60 containers per minute Up to 21 crates per minute
Container sizes	Bottle size: Diameter 50-130 mm, height 85-380 mm Can size: Diameter 50-100 mm, height 80-200 mm Crate size: Min: W: 120, H: 100, L: 120 mm/ Max: W: 405, H: 405, L: 530 mm
Optional features	Security mark recognition, full crate detector, crate color and logo detector

ENVIRONMENTAL

Humidity	Maximum 90% relative humidity, non-condensing
Temperature	+10°C to +40°C
Noise	The machine has been designed for indoor use Equivalent continuous sound pressure: LAeq < 70 dB

ELECTRICAL

Power consumption	Idle 55W, active 270 W
Mains	230 V AC 1-phase w/ground 50 Hz, min 10 A, max 16 A

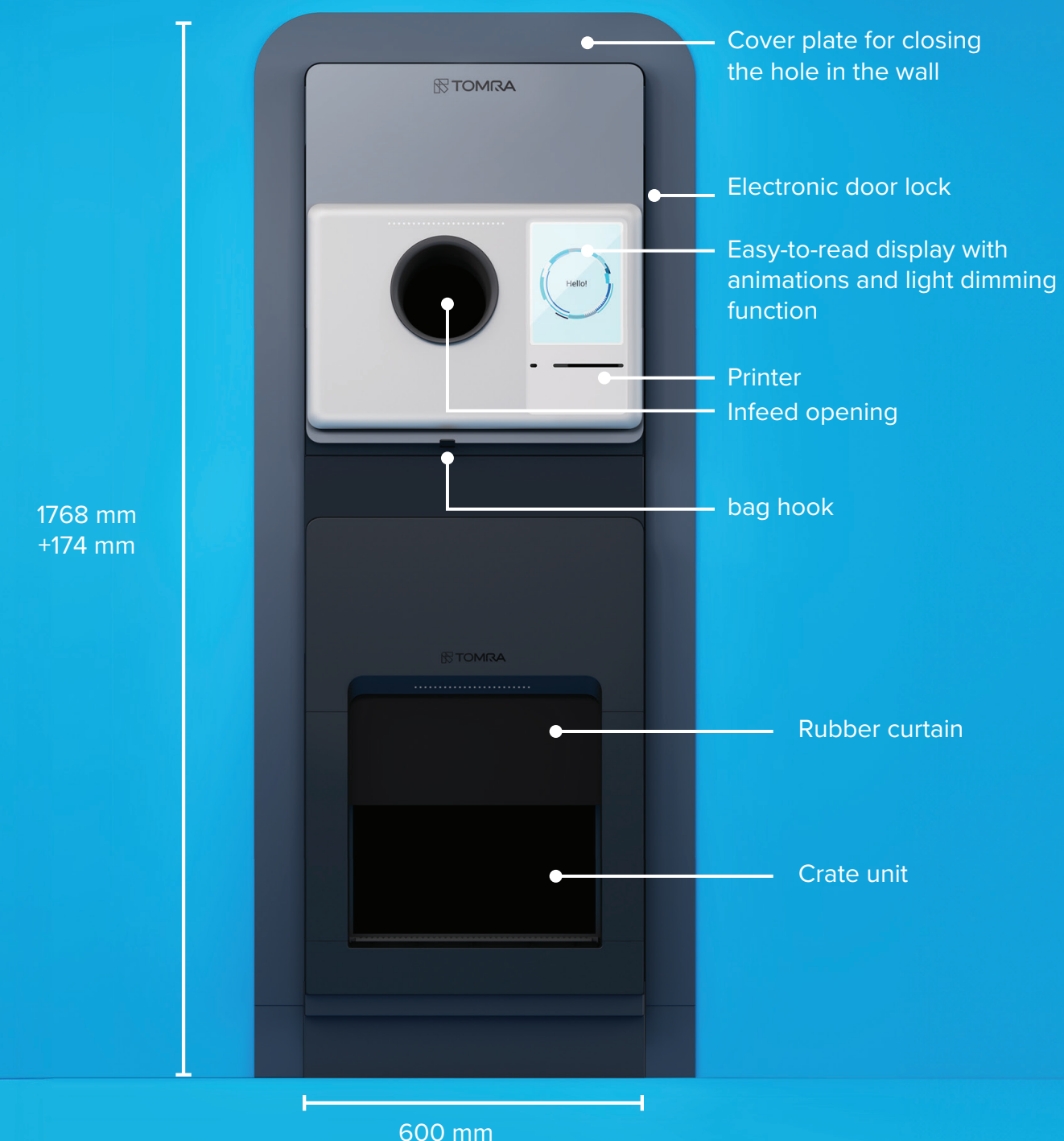
CONNECTIVITY

External IT interface	LAN (Ethernet TCP/IP), POS compatible
Digital tools	Fully compatible with TOMRA's portfolio of digital products and APIs

¹ To bottom of infeed cone.

² May vary according to packaging

³ Performance data and system speed may vary across markets, deposit regulations, system requirements and type of backroom cabinet.



TOMRA

Get in the Loop at tomra.com/reverse-vending



TOMRA CERTIFICATION

TOMRA SYSTEMS ASA has implemented and maintains a Quality and Environmental Management System which fulfils Nemko's provisions for Management System Certification and the requirements of standards NS-EN ISO 9001:2015 and NS-EN ISO 14001:2015, with the scope described by the organization on 2018-05-29. The certification covers the development and delivery of automated systems for recycling.



LEGAL COMPLIANCE

This product is part of a configurable system of machine components. When assembled on installation site, tested and connected to the grid, the installation must be labelled and have the CE mark affixed. The CE marking is based on the following European.

Directives:
2006/42/EU, Community Legislation on Machinery.
2014/30/EU, Electromagnetic Compatibility (EMC).
2011/65/EU, Restrictions of Hazardous Substance (RoHS).
2012/19/EU, Waste Electrical and Electronic Equipment (WEEE).

We reserve the right to make changes to specifications without prior notice. While every effort has been made to ensure all information contained in this document is accurate, TOMRA assumes no liability for any errors, inaccuracies or omissions that may occur. All products and offers are subject to country availability. Please consider the environment before printing.

TOMRA Collection

TOMRA Collection is part of the TOMRA Group, which is Leading the Resource Revolution by transforming how we obtain, use, and reuse our world's resources.

With installations across the world, retailers and consumers rely on our reverse vending machines to collect used bottles and cans that can be recycled into new containers.

Clean Loop Recycling is the easy and rewarding way to make choices that make change.

Get in the Loop at [tomra.com](https://www.tomra.com)

